

Input channel: 4 Input Channels

Tube Component: 3*3mm--30*10mm

Stick Width: 66mm

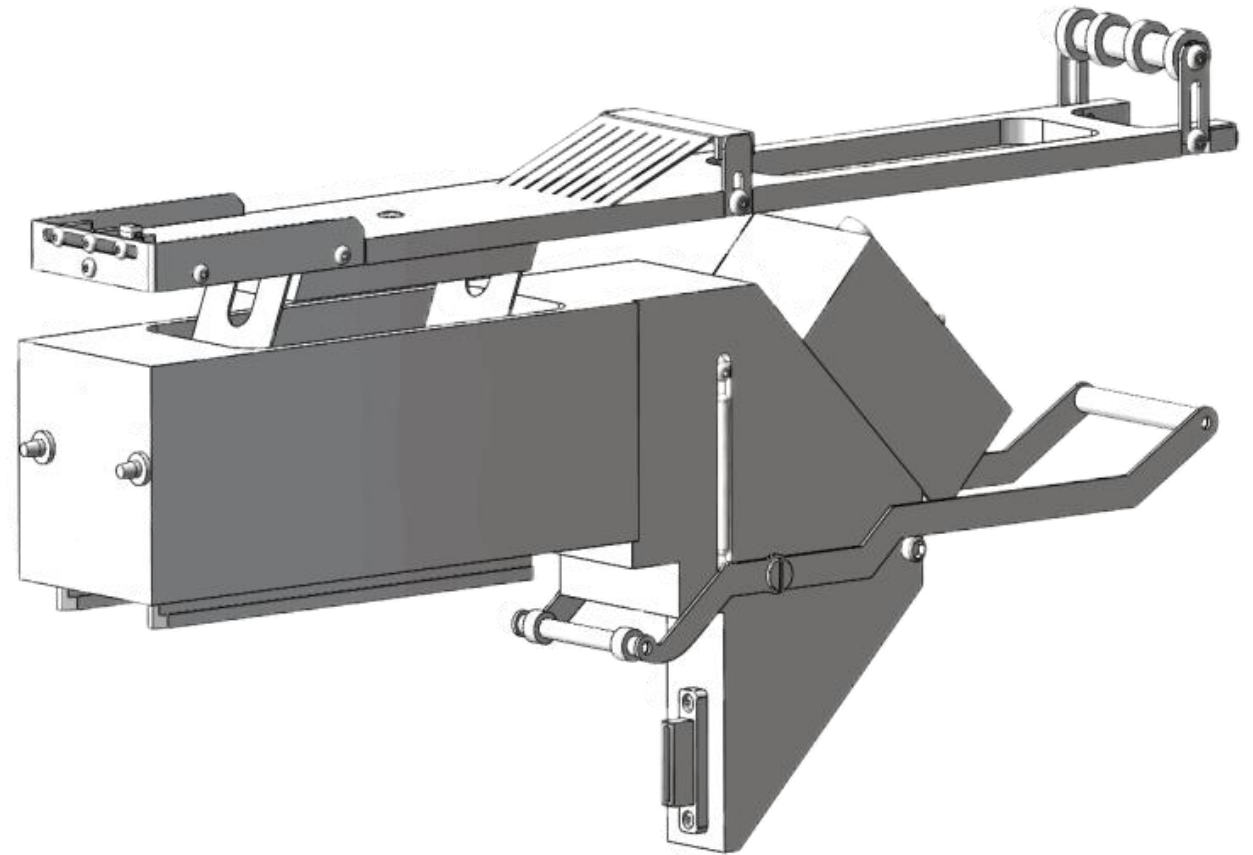
Overall size: 365 x 66 x 125 mm

Voltage: 24V DC

Power: 15W

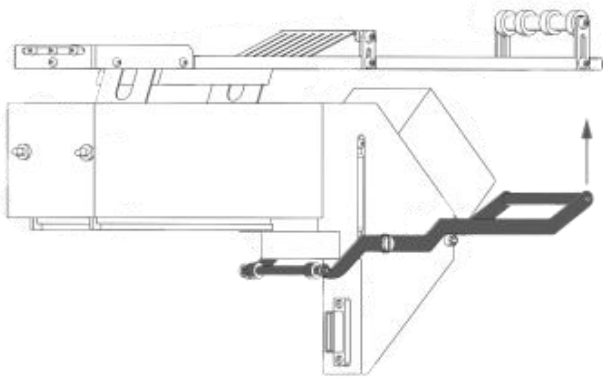
Weight: 6.5 KG

Model Compatible: JUKI RS-1

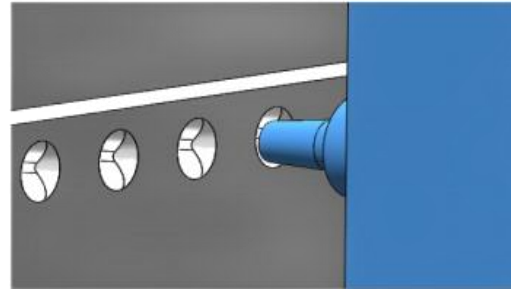


S-JVF02 Vibration Stick feeder Setup procedure

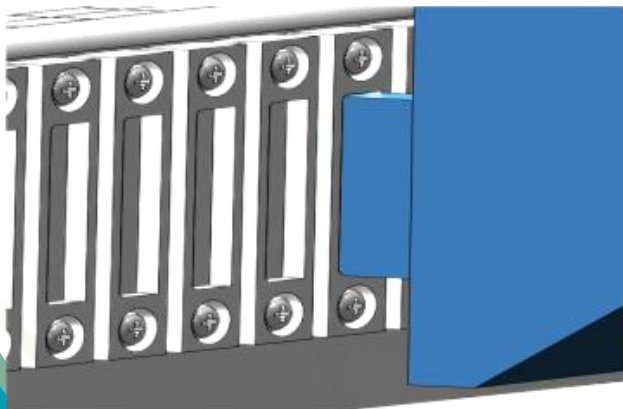
1: put up the handlebar



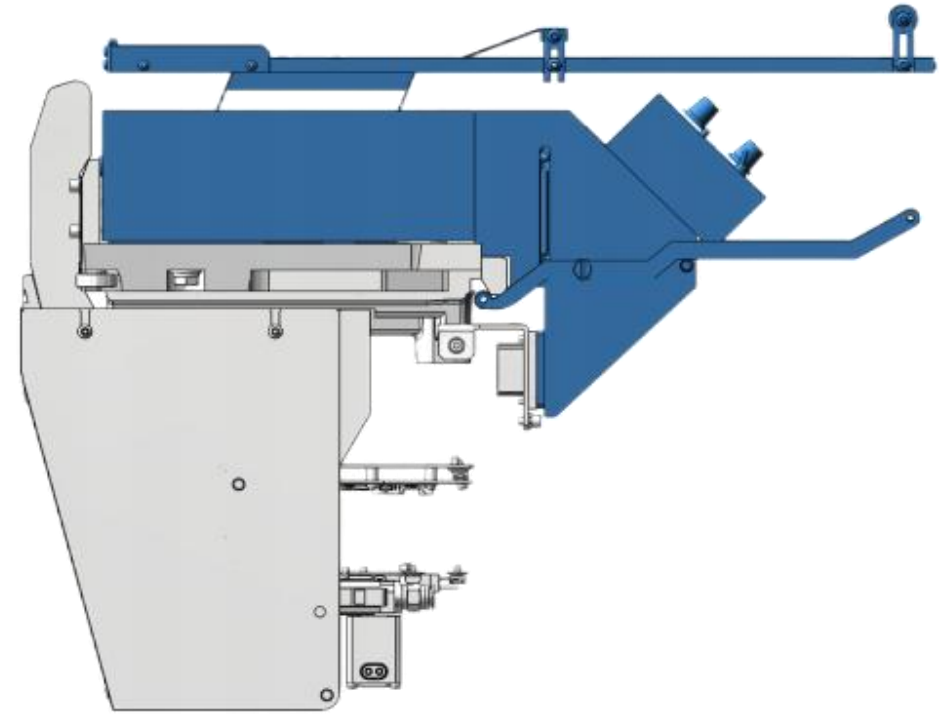
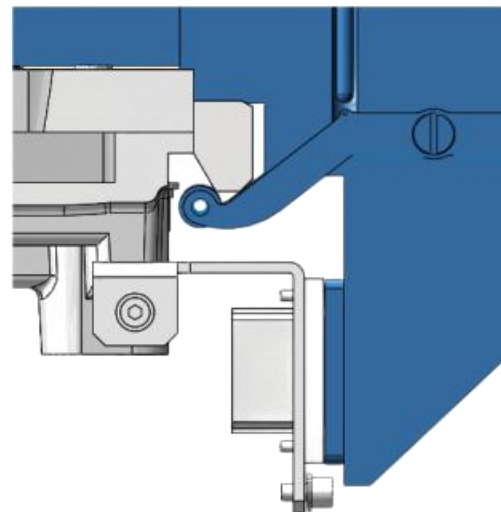
2: aimed at the alignment hole



3: aimed at the connector

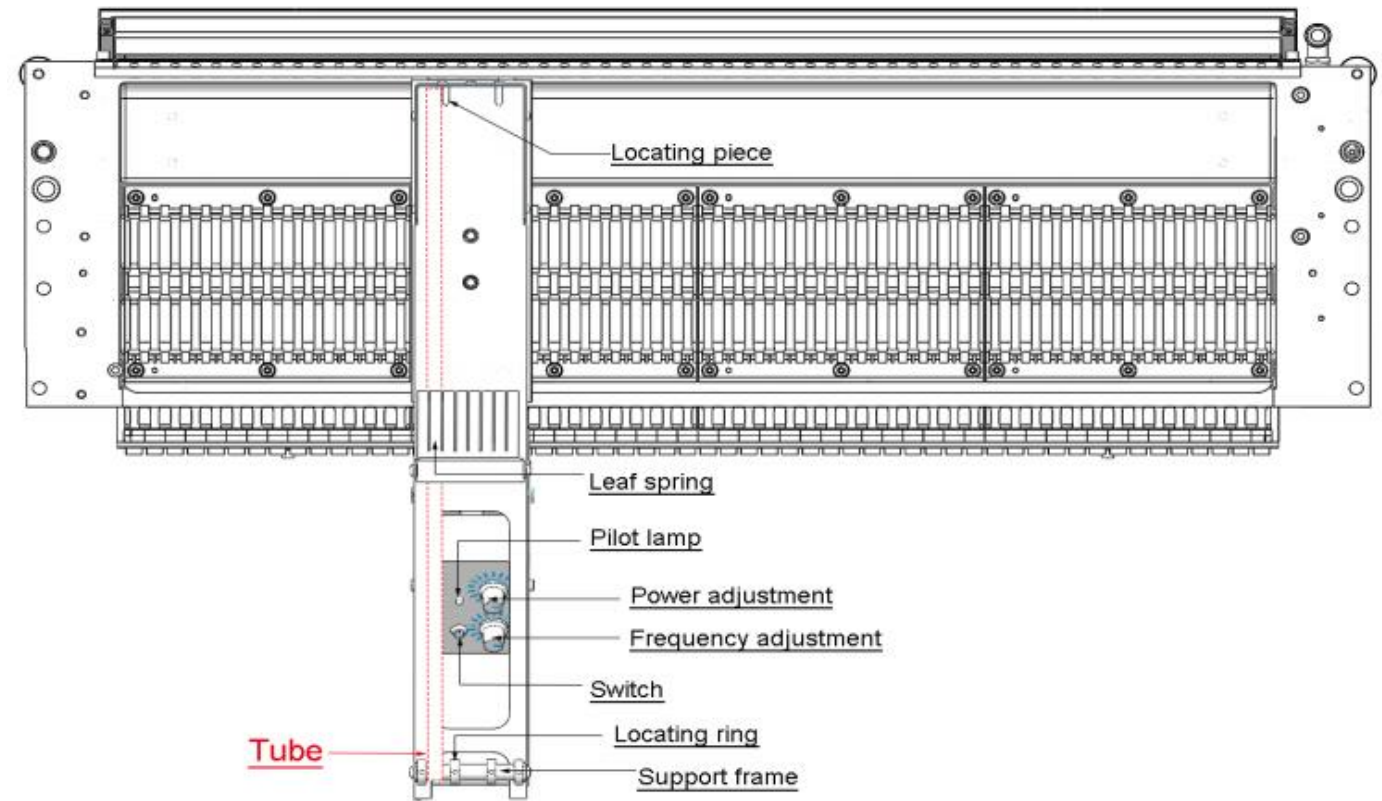


4: release the handlebar
and lock in the feeder bank



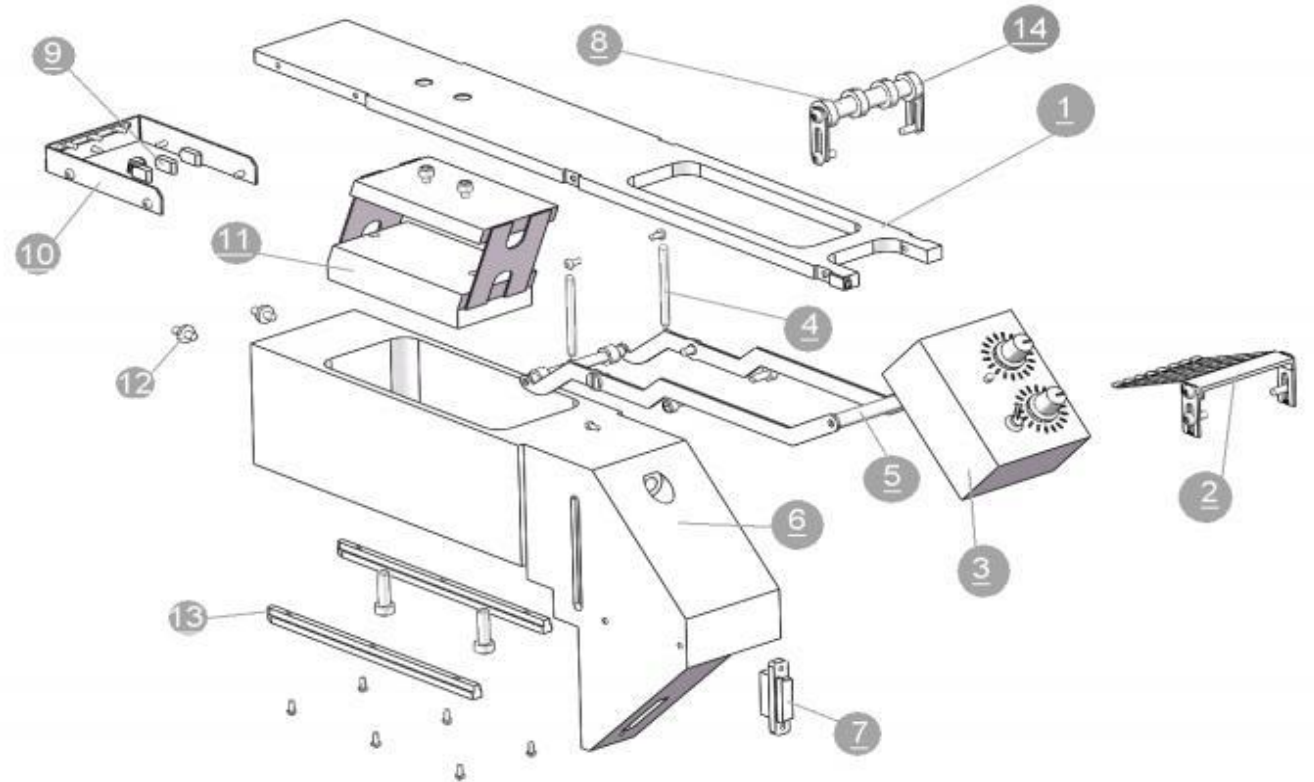
S-JVF02 Vibration Stick feeder Setup procedure

- 1, The end of tube should be above the support frame, and fixed by locating ring
- 2, Middle part of tube should be under the leaf spring and being in the pressure.
- 3, The front-end of tube should be fixed by locating piece, then cut off the top face of nozzle picking area on tube
- 4, Power on
- 5, Test and get the correct frequency and power setting to run components smoothly and speedily



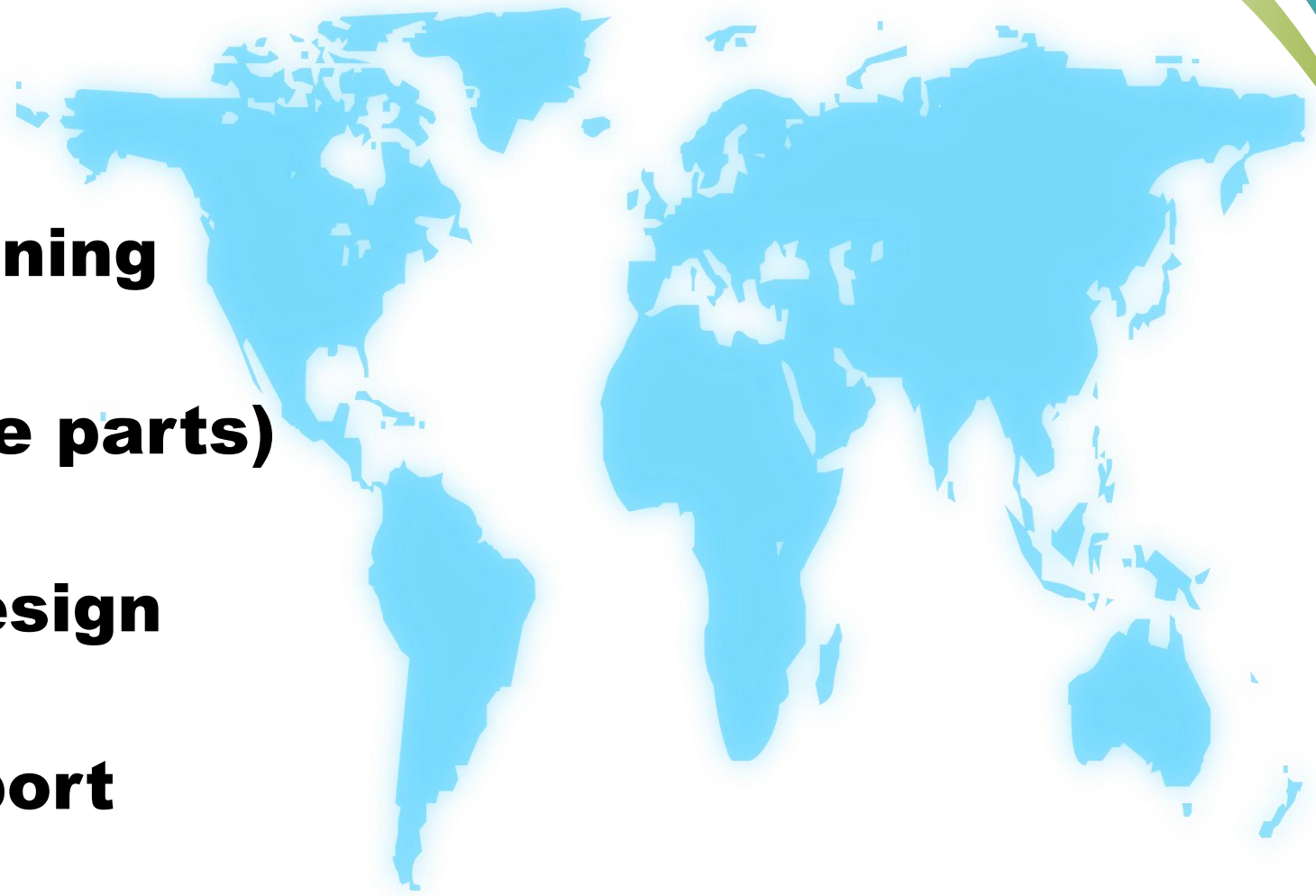
S-JVF02 Vibration Stick feeder Parts List

Item	Part No	Part Name
1	S-JVF02-052803	top-plate
2	S-JVF02-052802	leaf spring
3	S-JVF02-052805	control unit
4	S-JVF02-052806	spring
5	S-JVF02-052804	handlebar
6	S-JVF02-052801	main body
7	S-JVF02-052814	connector
8	S-JVF02-052811	support frame
9	S-JVF02-052813	locating piece
10	S-JVF02-052812	front cover
11	S-JVF02-052809	vibrator
12	S-JVF02-052807	locating pin
13	S-JVF02-052810	guide rail
14	S-JVF02-052808	locating ring



Best After-sales service

- **Free Installation/ Training**
- **1 day lead-time (spare parts)**
- **5 days customized design**
- **7x24 Worldwide Support**



Welcome Inquiry

Please visit

www.smthelp.com

Find us more

<https://www.facebook.com/autoinsertion>

Know more our team

<https://www.linkedin.com/company/smtmachine>

Welcome to our factory in Shenzhen China

See more our machine please Google

[Auto Insertion](#)

Youtube

<https://www.youtube.com/c/Smthelping>

Looking forward to your email

info@smthelp.com